

SUSQUEHANNA UNIVERSITY

Blough- Weis Library Newsletter

February 2001

Vol. 15, No. 3

Welcome to S.U.'s 14th President

The Library joins the entire Susquehanna University Community in extending a most warm welcome to Dr. and Mrs. L. Jay Lemons and their four children! We are *delighted* to have you here, and we wish you every success during your tenure. We look forward to giving all of you "The Grand Tour" of the Library. *Welcome!*

Reminder!

It's that time of year again! Tax forms are available in the Library, on a table adjacent to the Reference Desk. In addition to multiple copies of the most commonly used State & Federal forms, there is also a loose-leaf book of Reproducible Federal Tax Forms for specialty items.

In This Issue

<i>Welcome new president.....</i>	<i>1</i>
<i>E-Res Pilot Project</i>	<i>1</i>
<i>Tax Forms Available.....</i>	<i>1</i>
<i>New Databases Added</i>	<i>2</i>
<i>Instruction Sessions in Library.....</i>	<i>4</i>
<i>New Videos in Media Center.....</i>	<i>4</i>
<i>New Appointment in Cataloging.....</i>	<i>4</i>
<i>Two Accounts for Archives.....</i>	<i>4</i>

Electronic Reserves Project

Seven faculty members are participating in the E-Res Pilot Project, which was implemented this semester. The program allows students to access, electronically, supplemental readings of journal articles or book chapters faculty have placed on Course Reserves. Instead of having to come into the Library to read the assigned material, students are able to access the documents via computer 24 hours a day, 7 days a week. System statistics show Sunday as the most popular day of the week for reading items via Electronic Reserves. Over 1300 uses have been logged so far for the classes participating.

Documents are scanned and stored on a server which can be accessed from the E-Res link on the Library's Web Page. To comply with copyright restrictions, the system requires a log-on; this also permits S.U. students to access the readings from any computer with an Internet connection both on and off campus. Word through the grapevine and from participating faculty is that students are very pleased with this arrangement.

E-Res will be available for all faculty members in the Fall. Our Circulation Manager, Juli Boggs, has done a remarkable job of mastering the program in a very short time. Juli is willing to enroll interested faculty this semester if you would like to participate now.

Please take a moment to "check it out" by selecting the E-Res link at the bottom of the Library's Home Page, and logging on with your regular S.U. log-on.

New Online Databases

The following databases are now available to faculty, staff and students of the University. More information about the databases and quick access to them can be found by following the “*What’s New*” link on the Library’s Home Page. ***Please tell your students about them!***

FirstSearch has added 2 databases:

SocAbs (Full-File)

FirstSearch recently replaced ***SocioAbs*** with ***SocAbs (Full-File)***. This new database provides indexing and abstracting of 1500 journals in the following areas:

- ✓ *Community development*
- ✓ *Culture and social structure*
- ✓ *Demography and human biology*
- ✓ *Environmental interactions*
- ✓ *Family and social welfare*
- ✓ *Health and medicine and law*
- ✓ *Religion and science*
- ✓ *Social psychology & group interactions*
- ✓ *Welfare services*
- ✓ *Women's studies*

Information is drawn from an international selection of journals, serials, conference papers, books, and dissertations

Sources: Over 1,500
No. of Records: Over 520,000
Dates Covered: Citations: 1963 – date
Abstracts: 1974 – date

ATLA Religion

A new addition to the ***FirstSearch*** database is ***ATLAReligion***. The database of the American and Theological Library Association contains religious and theological literature for students and faculty. An international database that draws from over 1,430 sources, it contains thousands of citations to journal articles, and essays and book reviews from three ATLA print indexes:

- ◆ *Religion Index One*

- ◆ *Religion Index Two*
- ◆ *Index to Book Reviews in Religion*

Coverage spans over 50 years with selected records going back to 1818. Subjects as they relate to religion include:

<i>Anthropology</i>	<i>Philosophy</i>
<i>Business</i>	<i>Psychology</i>
<i>History</i>	<i>Religion</i>
<i>Anthropology</i>	<i>Law</i>
<i>Sociology</i>	<i>Medicine</i>
<i>Theology</i>	

Sources: Over 1,430
No. of Records: Over 1,200,000
Dates Covered: 1949 – present

InfoTrac’s OneFile

InfoTrac’s OneFile Database, from the makers of ***Expanded Academic Index (EAI) ASAP***, is a core database from which many specialized databases draw. ***OneFile*** uses the same interface as EAI. With over 6,100 journals with 3,000 full text, it covers humanities, education, business, science, current events, art, politics, economics, social science, law, health care, computers, technology, environmental issues, and general interest topics. Coverage is from 1980 to the present. Search by subject or keyword, basic or advanced mode; or limit the search to full-text or referred journals, to particular dates or to a specific journal title.

Business & Company Resource Center

InfoTrac's Business & Company Resource Center brings together in a single database company profiles, company brand information, rankings, investment reports, company histories, chronologies, and periodicals.

Search this database to find detailed company and industry news and information. This is a recent addition to InfoTrac’s set of databases. Coverage is from 1980 to the present.

Biography & Genealogy Master Index

The Gale Group's **Biography and Genealogy Master Index (BGMI)** has for years been the best place to search for information about people. It **indexes 12.7 million biographical sketches** in 3,400 current and retrospective reference works that cover individuals, living and deceased, from every field of activity and from all areas of the world.

Biography Resource Center + The Complete Marquis Who's Who

Also from the Gale Group, the **Biography Resource Center** combines over 300,000 biographies on more than 200,000 people from 70 respected biographical sources such as: *Contemporary Authors, Historic World Leaders, Newsmakers, Musicians, Contemporary Theatre, Film and Television, Notable Twentieth-Century Scientists, Religious Leaders of America, Contemporary Black Biography*, and a host of others. Full text articles from more than 250 periodicals are also included. Added features include the Complete Marquis **Who's Who** series and the *Merriam-Webster Collegiate and Biographical Dictionaries*.

New Grove Dictionary of Music and Musicians

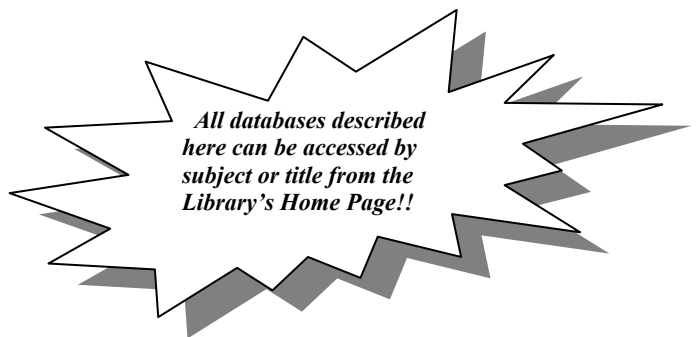
Now in print AND online! The **New Grove Dictionary of Music and Musicians** 29-volume set is a fine successor to the first printed edition of the *Dictionary of Music and Musicians*. Updates include the last two decades of the music world via scholarly articles, information about new composers and performers, and recent perspectives that have transformed traditional thinking in many key areas. Changes in the 2nd Edition, in print and online, are extensive.

Major **biographies** have been rewritten to reflect new research on musicians such as Machaut, Dufay, Bach, Handel, Gluck, Haydn, Weber, Monteverdi, Schubert, Bellini, Bruckner, Mahler, Strauss, Verdi, Stravinsky, Bartok and Britten. In addition, there are 2300 new entries

of 20th Century **composers** in Eastern and Central Europe and the former Soviet Union, Latin America, China, and sub-Saharan Africa. **Musicians and performers** from non-Western cultures are included for the first time.

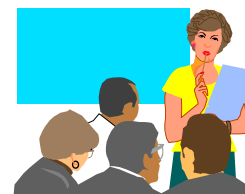
New **topics** covered include: Deconstruction, Postmodernism, Gender and Sexuality, Women in Music, Feminism, Gay and Lesbian music, Marxism, and Nazism. Other entries discuss jazz, rock, popular and light music, and the impact of technology on music.

Printed volumes available in the Library. Also available online to S.U. faculty, staff and students.



Did you know.....?

Reference Librarian Kathy Dalton has done 30 class presentations at faculty request during the first month of spring semester.



In addition to class presentations, all of the librarians are available to schedule individual sessions with students prior to conducting research for course papers. Please tell your students to contact us for an individual research consultation.

New Videos in Media Center

After Darwin: Genetics, Eugenics, and the Human Genome
Anna Karenina
Battle Of Algiers
Biruma No Tategoto or The Burmese Harp
Black Americans Of Achievement
Black & White
Borges And I
Burden Of Dreams
Burning Times
Can Tropical Rainforests Be Saved?
Clio Awards: 40th Anniversary Reel
Dersu Uzala
Edvard Munch
Estrogen Effect: Assault On The Male
Geisha
Gore Vidal's The Best Man
Her Mother Before Her: Winnebago Women's Stories Of Their Mothers & Grandmothers
Hermitage: A Russian Odyssey
Holy Ghost People
Idi I Smotri or Come And See
Illegal Americans
Indians Of North America: Video Collection II
Little Vera
Manchurian Candidate
Marquez: Tales Beyond Solitude
Moskva Slezam Ne Verit or Moscow Does Not Believe In Tears
Multicultural Peoples Of North America Video Series
Muro De Las Celebraciones: Los Murales De La Ciudad De México
Oblomov
Osenniĭ Marafon or An Autumn Marathon
People And The Land
La Plaza Del Diamante
Population Six Billion
Prestuplenie I Nakazanie or Crime And Punishment
Quebec & Atlantic Provinces
Resurgence: The Movement For Equality v. The Ku Klux Klan
Return To Paradise: A Documentary Video.
Sid And Nancy
Sophie's Choice
Stranger Than Paradise
Tragaluz
Trainspotting
Utomlennye Solnētisem or Burnt By The Sun
Vanishing Rembrandts
Voina I Mir or War And Peace
Why Not Clone A Human?
Wisdom of The Wild

-- Pat Fishbein

New Appointment in Cataloging

Tracy Hartman joined the staff on January 18th, 2001 as the temporary, one-year replacement for Jill Derr, who is absent on medical leave. Tracy will be assisting Pat Fishbein in the Cataloging Department. Following two weeks of fairly intensive specialized training and much studying of manuals, Tracy announced last week that she is feeling "quite confident" about the work. Her previous work experience and knowledge of software programs such as QuarkXpress, Adobe Photoshop and Pagemaker, Word, Excel, scanning technology and others provided a strong base upon which to build. Please join us in welcoming Tracy to the Library and the University.

University Archives Accounts

Academic VP Dr. Warren Funk and VP for Finance Don Aungst have established a budget line to purchase supplies for the University Archives. This lends additional support to the endowed account established last year by Professor of History Don Housley, a longtime supporter and advocate for the historical records of the University. Proceeds from the endowed account were used to purchase archival supplies during the 1999-2000 fiscal year.

*Thanks to Dr. Funk, Mr. Aungst and Dr. Housley for their support of this important unit. Funds will be used for supplies, and, as far as possible, for preservation and reformatting of brittle, at-risk documents. On the agenda once sufficient funds become available: preservation microfilming back to 1896 of the student newspaper, the **Susquehanna**, and its successor, the **Crusader**.*



Vol. 15 No. 3 p. 4
Rebecca A. Wilson, Editor