

# SUSQUEHANNA UNIVERSITY

## Blough- Weis Library Newsletter

Vol.17 No.1

September 2002

### ***iLINK REPLACES WEBCAT***



SIRSI, the vendor that supplied our online Library information system, recently unveiled a new interface for the online catalog. Bob Gessner and Pat Fishbein installed this upgrade over the summer. Called ***iLink***, the new version includes enhanced contents for selected recent publications such as:

- Book jacket images
- Author biographies
- Table of contents
- First chapters
- Reviews and summaries
- Academic best sellers and award-winning books linked to Library's holdings
- Quality web sites arranged by subject

Additional features allow users to customize their own web page when accessing the online catalog.

New features that will be enabled in the next several months will allow searches to be broadcast across multiple databases, and across multiple online library catalogs, simultaneously.

To take advantage now of the existing features of iLink, you will need a Library ID/PIN. This will be emailed to you in the very near future. The PIN should remain confidential to protect your records and privileges. For students, the PIN will be the same as the long-distance phone access code.

Using the "My Account" option and inserting an ID and PIN number, faculty and students can:

- Select subject and author preferences
- View checked-out items, renew books, and place holds
- Be notified of new acquisitions by favorite authors
- See additional subject headings on a topic while conducting a keyword search

You may use iLink without logging in to search the online catalog and access many other available web and local resources. But to view your user status, renew materials, place holds, update your address online, or create and access your customized iLink interface, it will be necessary to supply the account information.

If you forget your PIN, please ask a librarian to assist you. Call Chris Praul (x4459) or the Reference Desk (x4160) if you have questions.

To use iLink, go to the Library's home page, select "***Library Catalogs***", and then select ***iLink***, OR, visit:

<http://athena.susqu.edu/uhtbin/webcat>

--K. Gunning, K. Dalton, & B. Gessner

In This Issue	
Ilink Replaces WebCat.....	1
PALCI Membership.....	2
Databases Update.....	2
New Library Services.....	3
CHOICE Reviews on the Web.....	4
Inventory Completed.....	5
Time Out For Fun.....	5
New Videos & DVDs.....	4

"And books, we know, are a substantial world, both pure and good." -*Wordsworth*

## ***PALCI MEMBERSHIP***

The Library has joined PALCI (Pennsylvania Academic Library Consortium, INC.) to enable shared services that include group purchases of online databases, no-fee interlibrary loan lending, and borrowing privileges for faculty among member libraries. To borrow books from other libraries, faculty must fill out an authorization form signed by one of the Blough-Weis librarians, and register this form with the member library.

This brings to three the number of consortia in which the Library participates. Faculty may also borrow books from the ACLCP (Associated College Libraries of Central Pennsylvania) member libraries, and from selected libraries in the SLC (Susquehanna Library Cooperative). A list of participating libraries is attached.

## ***DATABASES UPDATE***

At the request of faculty, several databases have been added to the Library's growing list of online resources. Some of these were made possible through a group purchase as a new member of the PALCI Consortium. Also, after careful review of usage statistics, the Library discontinued some subscriptions and replaced a few print journals with the online version. Details follow.

### ***New Databases Added:***

- *MathSciNet\**
- *BioOne\**
- *EBSCO Academic Premier (upgrade)\**
- *Shakespeare Bibliography*
- *Faulkner's Advisory on IT Studies\**
- *Mergent (Moody's) on the web\**
- *Readers Guide Retrospective*
- *Ulrich's Periodicals Online*
- *WilsonSelectPLUS (upgrade)\**
- *CSA Suite of databases:*
  - *Worldwide Political Science Abs*
  - *Linguistics and Language Behavior Abs*
  - *ASSIA Applied Social Sci Index & Abs*
  - *BHI (British Humanities Abs)*
  - *Environmental Sci & Pollution Mgmt*
  - *Biological Sciences Database*
  - *Computer & Information Systems Abs*

\*Largely or entirely full-text

With the upgrades in existing databases and the addition of new subscriptions, the **full-text** of approximately **1500** new journals are available, bringing the total of full-text online journals to over **12,500!**

***More information about all of the databases, including scope, content, coverage, location and accessibility can be found by selecting "Library Databases" under the "RESOURCES" heading on the Library's home page.***

### ***Changes Made:***

***Value Line***, formally a CD-ROM product, is now available online via the web. The Library still subscribes to Value Line in paper format.

Based on low usage and the availability of comparable or increased information in other databases, in June the Library discontinued its subscriptions to WestLaw, ABI Inform/Select, and Corporate Affiliations PLUS (CD-ROM). In the case of the *printed* volumes of Moody's Company information (now called Mergent), the Library switched from print to online at no additional cost, thereby providing 24/7 access.

**And there has been an important change of which faculty should be aware.** In the spring Elsevier, a major publisher of scientific journals, acquired Academic Press, a purchase that has affected our subscription to the **IDEAL database**. Quite suddenly this summer, Elsevier decided to consolidate IDEAL with all other Elsevier titles to offer a greatly enhanced database along with a greatly enhanced increase in cost. *The new database, named Science Direct, will offer citations and abstracts to 1300 journals in the sciences, as well as full-text access to the original list of journals published by Academic Press, plus 40 more, bringing the total for which full-text is available to 175.* To stay within budget, the Library will transfer its *print* subscriptions to Elsevier titles to online full-text access.

Access to this scholarly database, along with the recent addition of 56 full-text journals in **BioOne**, represents significant progress towards advancing our coverage of information in the sciences.

## ***NEW LIBRARY SERVICES***

### ***Ask-a-Librarian (Electronic Reference)***

Last semester our student computer assistant Aaron Smiley worked with Reference Librarian Kathy Dalton and other librarians to create an *electronic reference request "mailbox"*. Students, faculty and staff can now submit email requests for research and reference assistance to the librarians. The request can be placed by selecting **"Ask a Librarian,"** under the **"RESOURCES"** heading on the Library's home page.

### ***Library's Home Page Revamped***

And speaking of the Library's home page, it has been updated again. Students mentioned that the look of the former page was *"so 90s....!"* Over the summer, the librarians worked to reorganize content; Bob Gessner, Systems Librarian, and Chris Praul, Public Services Librarian, were largely responsible for the new design. Please take a look and tell us what you think!



Redesigned Blough-Weis Library Homepage:

<http://www.susqu.edu/library>

### ***E-Res (Electronic Reserves)***

Not new, but still VERY popular, new faculty are encouraged to contact Chris Praul (x4459) or Juli Boggs, Circulation Assistant, (x4022) to place articles for reserve reading on electronic reserves. Favorable comments about this service continue to roll in from students, who would much rather do required reading in the residence halls at 2 a.m. with pizza and pajamas than in the Library!

## ***Off-Campus Access with EZProxy***

Bob was also busy this summer installing, among many other projects, a proxy server that utilizes the **EZProxy** software. *This server permits seamless access from off-campus to all our subscription databases, without the need for individual logins and passwords for each database.*

If you are off-campus and attempt to use one of our databases, you will be prompted once to log on using your S.U. computer account and password. After that, you will have access to all of the Library's databases, until you exit your web browser. This service represents a major improvement over last year, when each vendor required a unique login and password. Not all vendors were willing to participate so off-campus access was not enabled for all databases.

## ***Interlibrary Loan via FirstSearch***

OCLC has recently added a wonderful feature to the FirstSearch database. From any of the records retrieved following a search, users can select the **ILL icon** at the top of the **"Detailed Record"** for a book or article, and a screen will appear requesting minimal information such as name, status, department, etc. Once submitted, the request is sent via email to the Interlibrary Loan Assistant *without your having to re-key any of the bibliographic data.*

All the information needed for placing the ILL request is automatically transferred from the FirstSearch bibliographic record to the ILL assistant. A second very nice feature is a link that says: *"Connect to the Catalog at the Blough-Weis Library"*. Now we just have to wait for the vendors of other databases to catch on to this really efficient system!

Please recall that FirstSearch is a gateway to over 50 general and special subject databases, and includes the full-text *WilsonSelectPLUS* database, as well as *WorldCat*, the enormous bibliographic database with over 49 million records for books, serials, media and other materials.

### **Networked Computers / CD-ROMs Updated**

The 19 computers in the Library's networked database area (near the Reference Desk) were upgraded over the summer. This will greatly improve reliability and response time for students engaged in the library and research instruction sessions provided by Kathy Dalton and Chris Praul. CD-ROMs, which must be used on a computer *in the Library*, were also reinstalled onto various PCs along the North Wall. Now several students can access the CD-ROMs simultaneously.

***All faculty are encouraged to arrange a customized session for their students, who experience hands-on instruction conducting electronic research.***



### **Turnitin.com**

The University has renewed its subscription to the Turnitin.com service for another year. This online service permits faculty and students to submit papers electronically to the Turnitin.com database to determine content originality. In addition to plagiarism-detection, the service offers such features as peer review (an anonymous forum for students to learn from and critique each other's work) and digital archiving. It also presents an opportunity for faculty to discuss with students in a broad context the nuances of incorporating ideas from other writers (with proper citations) into their own work. For additional information, to open an account, or to obtain a brochure describing this service, please call Becky Wilson at x4321.

### ***CHOICE REVIEWS ON THE WEB***

*Choice*, a publication of the Association of College and Research Libraries, regularly publishes book reviews of works suitable for college libraries. They are available in 3 formats:

- The original monthly journal format.
- An individual 3" x 5" card for each review.
- A website with all reviews since 1988.

The Blough-Weis Library now has these 3 formats. Last year, as we brought up our *web subscription*, our subscription to the *card version* was accidentally suspended. After months of effort by our library staff, our subscription to the cards was reinstated. We have received part of the backlog of cards and distributed them to the heads of academic departments. Acquisitions Assistant Ann Marie Rompolski will continue to send to department heads the cards for the reviews as they arrive.

Department heads are requested to distribute these cards by specialty within their department. To place orders with the library using the *Choice* cards, a faculty member should write his/her name and department on the selected cards and send them to Ann Marie.

If any faculty members would prefer to access these book reviews online at the *Choice* web site, please contact Kathleen Gunning, Library Director at x4320, or [gunning@susqu.edu](mailto:gunning@susqu.edu). *Choice* will issue pin numbers and web subscriptions to each interested person. Each month, when the new reviews are posted to the web site, those faculty members will receive an email notification. They can:

- Browse the relevant subject sections of My Current Issue
- Search by subject for reviews back to 1988
- Email the list of citations to be ordered to Ann Marie at [rompolsk@susqu.edu](mailto:rompolsk@susqu.edu)

If all members of a department decide to access *Choice* online and no longer wish to review the card format, please contact the library and we will cease sending the cards to that department.

--Kathleen Gunning

## ***INVENTORY COMPLETED***

The summer months are always a very busy time for Library staff to accomplish projects that cannot be done during the academic year. Chris Praul oversaw a wonderful group of students as they completed a full inventory of the Library's circulating books. This onerous task accomplishes several goals: identifies missing or lost books, allows for shelves to be put in order, locates books that for some reason are not in the online catalog, and ultimately results in a more precise fit between what's on the shelves and what *iLink* says we own. The inventory is, however, just the beginning of the process. Fall-out from the project will occupy staff well into the semester, as discrepancies are resolved and lost/missing books are replaced.

## ***TIME OUT FOR FUN!***

The First Annual Blough-Weis Library Golf Tournament took place this summer at the Sunny Hills Golf Course in Sunbury. Taking a break after work one sunny afternoon, several student workers and a few staff members cruised down to the golf course (all at the instigation of – who else but - Chris Praul) and reportedly “had a ball!” Chris organized the event for the student workers who did an incredibly fine job this summer with the inventory and other tasks. Those of us unable to attend clearly missed out on a hilarious afternoon. The big winners: student workers Jonathan Martin and Brian White!



## ***NEW VIDEOS AND DVD's***

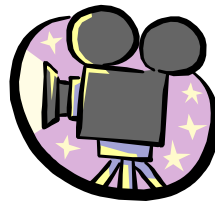
**50 Years War: Israel And The Arabs\*\***  
**66 Was A Good Year For Tourism**  
**Acropolis Now: The Public Face Of The State**  
**Afghanistan: Exporting The Taliban Revolution**  
**African Queen**  
**Altalena**  
**America's First Synagogues**  
**Ancient Britons**  
**Ancient Egypt**  
**Ancient Rome**  
**Apocalypse Now Redux\*\***  
**Behind The Veil: Afghan Women Under  
Fundamentalism**  
**Bionic Beauty Salon**  
**Blue La-Hofesh Ha-Gadol = Late Summer Blues**  
**Brother Born Again**  
**Cabaret**  
**Caring For Your Microform Collection: The Next  
Step In Preservation**  
**Chekhov**  
**Conflict**  
**Cyberoma**  
**Death And The Maiden**  
**Delta Jews: Jews In The Land Of The Blues**  
**Doing As They Can**  
**Dreamers And Builders**  
**Dream worlds 2: Desire/Sex/Power In Music  
Video\*\***  
**Egypt: A Gift To Civilization**  
**Family And Community Genograms In  
Multicultural Counseling: Psychotherapy  
As Liberation**  
**Global Generation**  
**Gmar Gaviya**  
**Great Religions Of The World**  
**Greeks: Crucible Of Civilization\*\***  
**He Said, She Said: Gender, Language, and  
Communication**  
**House Of The Spirits\*\***  
**How Rare A Possession: The Book Of Mormon**  
**In-Depth**  
**Ingathering**  
**Jane Eyre**  
**Jang Aur Aman = War And Peace**  
**Jew In The Lotus**  
**Joel Barker's The New Business Of Paradigms [Kit]**  
**Ha-Kayits Shel Aviha = The Summer Of Aviha  
Kazablan**  
**King Minos And The Minoans At Crete**  
**Kippur\*\***  
**L.A. Mohel**

**Makolet**  
**Mammoth Hunters**  
**Management In Chinese Cultures**  
**Me-Ahore Ha-Soragim = Beyond The Walls**  
**Miriam's Daughters Celebrate**  
**Multigenerational Influences: Family-Of-Origin  
 Patterns**  
**New Rulers Of The World: A Special Report**  
**Noce En Galilee = Urs Al-Jalil**  
**Of Love And Shadows**  
**Ottoman Empire**  
**Pitra, Putra Aur Dharamyuddha = Father, Son And  
 Holy War**  
**Providing A Future For The Past**  
**Raama Ke Naama = In The Name Of God**  
**Rap: Looking For The Perfect Beat**  
**Roman Empire In The First Century**  
**School Of The Americas, School Of Assassins**  
**Shanghai, La Nueva Via China**  
**Shirat Ha-Sirenah = Song Of The Siren**  
**Shvil Hahalav = The Milky Way**  
**Sign, Symbol, Script: Origins Of Written  
 Communications And The Birth Of The  
 Alphabet**  
**Singin' In The Rain**  
**Sword & Spirit**  
**There Was No War In '72**  
**Tillie Pierce Of Gettysburg**  
**True Story Of The Roman Arena**  
**Truth About Lying**  
**U.S.-Afghanistan Relations: Gaining Perspective**  
**Ubu Roi**  
**Understanding Biases And Assumptions**  
**Understanding Hindu Traditions**  
**Viaggio Nell Antica Pompei =Journey Through  
 Ancient Pompeii**  
**Viskningar Och Rop = Cries And Whispers\*\***  
**Who Killed Vincent Chin?**  
**Whose State? Whose Religion?**  
**Why Value Diversity?**  
**Women Of The Wall**  
**World Bank: The Great Experiment**  
**Yidl In The Middle: Growing Up Jewish In Iowa**  
**Zirkus Palestina**

**\*\*DVD**



*A special note of thanks to Pat Fishbein for regularly providing the list of new videos and DVDs added to the Media Center.*



*Please recall that the Newsletter is also available online (in color!) and can be accessed from the Library's home page.*

# SUSQUEHANNA UNIVERSITY BLOUGH-WEIS LIBRARY

## CONSORTIUM AGREEMENTS

*The Blough-Weis Library at Susquehanna University has formed agreements with three library consortia. These combined libraries participate in a variety of shared services which include resource sharing, no-fee interlibrary loans, reciprocal borrowing privileges for faculty and sometimes students, and group purchasing of electronic databases.*

*Faculty may borrow books from many of the libraries listed below. However, the requirements for obtaining a borrower's card vary for each consortium, as indicated below. If you plan to visit one of the libraries, you may want to have us place a call before your visit, to get information specific to your library of interest.*

### **The Associated College Libraries of Central Pennsylvania (ACLCP)**

*Faculty will need to show a valid S.U. ID to the Circulation staff of these libraries, then follow local requirements. Some libraries may require that you purchase or obtain a library card. Some will do it right away; others will mail the card to you at a later date.*

Albright College	Gettysburg College	PA College of Technology
Alvernia College	Harrisburg Area Comm Col	Penn State Harrisburg
Bloomsberg University	Juniata College	Shippensburg University
Bucknell University	Kutztown University	State Library of PA
Dickinson College	Lebanon Valley College	Susquehanna University
Dickinson School of Law	Lycoming College	US Army War College
Elizabethtown College	Messiah College	York College
Franklin & Marshall College	Millersville University	

### **The Susquehanna Library Cooperative (SLC)**

*Some of the libraries in SLC permit personal borrowing. Ask about their rules at the Circulation Desk, or let us call ahead for you.*

Bloomsberg University	Laurel Health System	PA College of Technology
Bucknell University	Lock Haven University	PA Power & Light
Geisinger Health System	Lycoming College	Susquehanna Health System
Guthrie Health Care System	Mansfield University	Susquehanna University
James V. Brown Library	North. Appalachian Rsch Lab	

**Pennsylvania Academic Library Consortium, Inc. (PALCI)**

*Faculty may borrow from PALCI member libraries, but must first obtain a form signed by a Blough-Weis librarian. Call the Reference Desk (x4160) to arrange this. The form must be taken to the Circulation Desk of the library you plan to visit.*

Bloomsburg University	Edinboro University	St. Joseph's University
Bryn Mawr University	Eastern College	Shippensburg
Bucknell University	Gettysburg College	Shippensburg University
Cabrini College	Haverford College	Slippery Rock University
California U. of PA	Indiana U. of PA	Swarthmore College
Carnegie Mellon University	Kutztown University	Temple University
Clarion University	LaSalle University	University of Pittsburg
Dickinson College	Lafayette College	University of Scranton
Drexel University	Lehigh University	Villanova University
Duquesne University	Marywood University	West Chester University
East Stroudsburg University	Messiah College	Widener University (Chester Campus only)
	Millersville University	
	Robert Morris College	

***Sample of PALCI Borrowing Authorization Form:***

**PENNSYLVANIA ACADEMIC LIBRARY CONSORTIUM, INC.  
(PALCI)  
DIRECT FACULTY BORROWING AUTHORIZATION**

Library Staff:

This completed form serves as a confirmation that the faculty member listed below is currently a member of the faculty at the academic institution served by the participating PALCI library. (Please print all information.)

Please add this faculty member to your patron database and allow him/her access to materials as is standard at your institution.

Date: \_\_\_\_\_

Faculty Member Name \_\_\_\_\_

Faculty Library ID Number \_\_\_\_\_ Expiration Date \_\_\_\_\_

College or University \_\_\_\_\_

Authorizing Librarian \_\_\_\_\_

Librarian's Telephone # \_\_\_\_\_

Librarian's E-mail Address \_\_\_\_\_